

TITLE: Narrow diameter implants for the rehabilitation of edentulous posterior regions. A retrospective clinical study with up to 11 years of follow-up.

AUTHORS: *Paulo Maló*, Private practice, Department of Surgery and Prosthodontics, Malo Clinic, Lisbon, Portugal; *Miguel de Araújo Nobre*, Private practice, Department of Clinical Research, Malo Clinic, Lisbon, Portugal

RUNNING TITLE: Narrow diameter implants in posterior regions of the jaws.

CORRESPONDENCE TO: Paulo Maló, DDS, Clínica Malo, Avenida Dos Combatentes, 43, 9C, Edifício Green Park, 1600-042 Lisbon, Portugal, tel: +351 21 722 81 00, fax: +351 21 726 6965, e-mail: research@maloclinics.com

KEYWORDS: narrow diameter implants, immediate function, posterior regions, NobelSpeedy, Branemark system.

ABSTRACT

Statement of problem: There is limited evidence for the use of narrow diameter implants for rehabilitation of the posterior regions of the jaws using different surgical techniques. The purpose of this study was to report the clinical results of implant supported prosthetic rehabilitations in the posterior regions of both jaws, using narrow diameter implants.

Materials and Methods: The study included 147 patients (115 males and 32 females), with an age range of 26-77 years (mean= 47.5 years), followed between 1 and 11 years, with a median follow-up time of 5 years. The patients were in need of fixed prosthetic implant supported rehabilitations in the posterior region of the jaw, presenting a reduced interradicular bone or a thin alveolar crest. The evaluation of implant outcome was based on the Malo Clinic success criteria: implants function as support for reconstruction, implants stable when individually and manually tested; no signs of infection observed; and good esthetic outcome of the rehabilitation.

Results: The survival rate for narrow diameter implants was 95.1% at 11-years (Kaplan-Meier), with a distribution of 91.4% at 11-years, 95.9% at 10 years, and 95.5% at 9 years for the 2-stage, 1-stage and immediate function techniques, respectively.

The mean marginal bone resorption recorded at 1-, 5-, and 10-year were 1.16mm, 1.53mm, and 1.74mm, respectively. Backward conditional logistic regression identified “type of implant” as a strong protective factor against implant failure (MkIII and Noblespeedy implants compared to the MkII implant; OR=0.14); and “type of rehabilitation” as a strong risk factor for implant failure (partial rehabilitations compared to single teeth rehabilitations; OR= 4.75).

Conclusions. The results indicate that within the limitations of this study, the use of narrow diameter implants for the prosthetic rehabilitation of posterior regions of the jaws is viable, with good outcomes in the long-term, irrespective of the surgical technique implemented.

Uncorrected version

INTRODUCTION

The rehabilitation with oral implants is sustained in the osseointegration concept.

This concept is based on the anchorage achieved by endosseous implants to the bone.¹⁻⁵

Narrow diameter implants are used in specific conditions of rehabilitation such as a reduced interradicular bone, thin alveolar crest or replacing teeth with a small cervical diameter.⁶

Results from clinical studies have shown high survival rates irrespective from the surgical approach that was used, ranging between 96% and 98.7% at 5 years using a 2-stage surgical approach;^{7,8} 96.4% at 1-year using a 1-stage surgical approach;⁹ and 99.4% using the immediate function approach.⁶

Caution in the use of narrow diameter implants has been advocated due to the concern regarding the negative impact of loading in these implants, with lower stability when compared to regular platform implants,¹⁰ and increased probability of fracture in clinical practice.¹¹ Moreover, non linear finite element analysis have shown that the neck of the implant represents a potential zone of fracture when subjected to high bending forces,¹² making it mandatory to increase the implant support to improve the biomechanical outcome of the treatment with narrow diameter implants.¹³

Posterior regions of the jaws with reduced bone quantity and quality makes it challenging to rehabilitate without the use of complex reconstruction techniques.^{14,15}

However, the use of narrow diameter implants in delayed-loading have shown to be an alternative treatment solution for these conditions.^{7,16,17}

The aim of this retrospective clinical study was to assess the clinical outcome of narrow diameter implants placed in posterior regions of both jaws, comparing the implant success outcome using 2-stage, 1-stage and immediate function approaches.

MATERIALS AND METHODS

This study was performed at a private practice (Malo Clinic, Lisbon).

One-hundred and forty seven patients were consecutively included in this study (115 males and 32 females), with an age range of 26-77 years (mean: 47.5 years). The patients were included provided the need of rehabilitation with narrow platform implants in posterior regions of both jaws. Objectively, in areas that either presented a reduced interradicular bone or a thin alveolar crest (with enough bone volume at the implant site to receive a 3.3mm implant in diameter), sufficient residual bone volume to receive at least 10mm implants in length. The patients with the following conditions were excluded from the study: insufficient bone volume to place implants with at least 3.3mm in diameter and 10mm in length, need of bone grafting procedure and immunodeficiency pathology. A total of 247 implants were placed. They were 35 MkII implants (Branemark System, Nobel Biocare); 137 MkIII implants (Branemark System, Nobel Biocare); and 75 Nobelspeedy Groovy implants (Nobel Biocare). The first implant was placed in May 1995 and the last in June 2007, and were followed between 1 year and 11 years (with a median of 60 months). The implants were all 3.3mm in diameter and ranged between 10mm and 15mm in length. The implant distribution by the different locations and type of surgical approach is given in Tables Ia and Ib.

A total of 144 implants were placed in the maxilla and 103 in the mandible. One-hundred-twenty-seven implants were machined surface and 120 implants were TiUnite surface (Nobel Biocare). Regarding the surgical technique, a total of 35 implants were inserted through the 2-stage technique, 146 implants by the 1-stage technique and 66 implants inserted through the immediate function technique.

A total of 229 prostheses were placed, 138 in the maxilla and 91 in the mandible. Of these, 183 were single tooth restorations (110 in the maxilla and 73 in the mandible); 36 short span (replacing up to 4 teeth) fixed partial dentures (SFPD) (23 in the maxilla and 13 in the mandible); and 10 complete edentulous rehabilitations (5 in the maxilla and 5 in the mandible). The same team performed both surgery and prosthodontic treatment.

The surgical procedures were performed under local anesthesia with mepivacaine chlorhydrate with epinephrine 1:100,000 (Scandinibsa 2%; Inibsa Laboratory, Barcelona, Spain). All patients were sedated with 1 diazepam tablet (Valium 10 mg; Roche, Amadora, Portugal) prior to surgery.

Antibiotics (amoxicillin 875 mg plus clavulanic acid 125 mg Labesfal, Campo de Besteiros, Portugal) were given 1 hour prior to surgery and daily for 4 days thereafter (every 8 hours). Corticosteroid medication for control of the inflammatory response (prednisone; Meticorten, 5 mg, Schering-Plough Farma, Lda, Agualva-Cacém, Portugal) was given daily in a regressive mode (15 mg at surgery, 10 mg on the first 2 days post-operatively, and 5 mg in days 3 and 4 post-operatively). Anti-inflammatory medication (ibuprofen, 600 mg, Ratiopharm, Lda, Carnaxide, Portugal) was administered on day 5 post-operatively every 12 hours. Analgesics (Clonix 300 mg; Janssen-Cilag Farmaceutica, Lda, Barcarena, Portugal) were given on the day of surgery and postoperatively for the first 3 days, as needed.

Teeth or roots were extracted at the time of surgery prior to implant placement. The area was made free from soft-tissue remnants and in for tooth extraction sockets, cleaned by curettage, to keep infected tissue to a minimum. After this, the insertion of the implants followed the standard procedures.¹⁸ A surgical guide was used for optimal implant positioning when applicable. The drilling sequence was modified to achieve maximal

apical anchorage, and countersinking was eliminated to preserve marginal bone. The implant neck was positioned at the coronal marginal crest level, and bicortical anchorage was established whenever possible. The decision between 1-stage and immediate function was taken preoperatively, with the implants placed in aesthetic areas and with a minimum insertion torque of 30 Ncm for accepting the implant for immediate function.

The patients rehabilitated through the immediate function technique, received an acrylic immediate provisional implant supported restoration. After 4 to 6 months, the definitive abutments (Nobel Biocare AB) were placed when a change in abutments was indicated, an impression was made, [using silicone (Elite HD +, Zhermack, Rovigo, Italy)] and the patients received their definitive prostheses. In some completely edentulous situations, milled precision titanium prosthodontic frameworks (Procera Implant Bridge; Nobel Biocare AB) were placed. An example of clinical treatment is presented in Figures 1 to 7.

After surgery the patients were enrolled in an implant maintenance program. The patients were placed on a soft food diet for 2 months.

Ten days after surgery, the sutures were removed, and evaluations were performed regarding hygiene and implant stability. The procedure was repeated 2 and 4 months after surgery until a stable situation was secured.

Periapical radiographs (Kodak, Rochester, NY) were made at implant insertion, 6 months, 1 year, and each year thereafter. A conventional radiograph holder (Super-bite, Hawe-Neos, Switzerland) was used, and its position was manually adjusted for an estimated orthognatic position of the film, so that the position of the film was as parallel as possible to the implant. The reference point for the reading was the implant platform, that is, the horizontal

interface between the implant and the abutment. Marginal bone remodeling was defined as the difference in marginal bone level relative to the bone level at the time of surgery. The radiographs were grouped as follows: implant placement, 1-year, 5 years and 10 years of follow-up.

An implant was classified as a success according to the Malo Clinic success criteria: (1) it fulfilled its purported function as support for reconstruction; (2) it was stable when individually and manually tested; (3) no signs of infection observed; (4) no radiolucent areas around the implants; (5) demonstrated a good esthetic outcome of the rehabilitation; and (6) allowed a construction of the implant supported fixed prosthesis which provided patient comfort and good hygiene maintenance. The following complication parameters were assessed: 1) mechanical complications (fracture or loosening of mechanical and prosthodontic components); 2) biological complications (peri-implant pathology, soft tissue inflammation, fistula formation, pain); 3) esthetic complications (esthetic complaints of the patient or dentist); and 4) functional complications (phonetic complaints, masticatory complains, comfort complains or hygienic complains).

Descriptive statistics were used to classify the variables of interest. Survival analysis was performed using the Kaplan Meyer Product limit estimation with comparison of survival through complementary statistical tests (Tarone-Ware).

The association between patient age (≤ 35 years, >35 years), patient gender (female, male), smoking status (non-smoker, smoker), implant position (maxilla, mandible), type of implant (MkII, MkIII, Nobelspeedy), implant length (≤ 11.5 mm, ≥ 13 mm), implant surface (machined, TiUnite), staging of surgery (2-stage surgery, 1-stage surgery, immediate function), type of rehabilitation (single, partial, complete edentulous),

surgeon experience (limited experience, experienced, very experienced) and the outcome variable implant failures was evaluated by backward conditional logistic regression to estimate odds ratios (ORs) and corresponding 95% confidence intervals (CIs). The effect of each factor was assessed in univariate (crude) analysis and after adjusting for the other variables of interest. The level of significance considered was 5%.

RESULTS

A total of 12 implants were lost in 12 patients (1 implant per patient) rendering a survival rate of 95.1% at 11 years (Kaplan-Meier). The mean survival estimate was 149.2 months [95% CI: 144.9-153.5 months (the maximum registered follow-up for an implant was 157 months)].

The distribution of the 12 implant losses is illustrated in table II.

Taking into consideration the surgical technique, the distribution of survival was: For the 2-stage technique, 91.4% at 11 years with a mean survival estimate of 145.6 months [95% CI: 133.1-158.2 months (for a maximum registered implant follow-up of 157 months)]; For the 1-stage technique, 95.9% at 10 years with a mean survival estimate of 117.2 months [95% CI: 113.4-121 months (for a maximum registered implant follow-up of 122 months)]; For the immediate function technique, 95.5% at 9 years with a mean survival estimate of 104.6 months [95% CI: 97.2-112 months (for a maximum registered implant follow-up of 111 months)] (Figure 8).

The differences in survival between the 3 different surgical techniques were not significant ($p=0,760$).

The overall mean (standard deviation) bone resorption was 1.16mm (0.8mm), 1.53mm (0.8mm) and 1,74mm (0.9mm) after the first year, fifth year, and tenth year of function,

respectively. Representative periapical radiographs of implants with 1-, 5- and 10-years of follow-up are displayed in figures 9 to 11.

Table III shows the variables “type of implant” and “type of rehabilitation” that were significantly associated with the outcome variable implant failure. In multivariate analysis, the type of implants MkIII and Nobelspeedy (OR=0.14) remained as a protective factor against implant failure when compared with the MkII implant (indicator variable). The partial rehabilitation (OR=4.56) remained as a risk factor for implant failure when compared with the single tooth (indicator variable).

DISCUSSION

The 95% survival rate at 11 years for narrow diameter implants placed in posterior regions are comparable to results with larger diameter implants.^{19,20} It supports the hypothesis that narrow diameter implants can be used in prosthetic rehabilitations in the posterior regions of both jaws with a predictable positive outcome.

The surgical technique did not influence the outcome of survival for narrow diameter implants, with no significant differences between the 2-stage technique, the 1-stage technique and the immediate function technique. This result is supported by the literature, where the survival results between 2-stage and immediate function techniques are not significantly different,^{21,22} provided that the minimum criteria for accepting the implant for immediate function is followed.

The values for marginal bone resorption recorded in this study at 1-, 5-, and 10-years (not exceeding 0.2mm/year of bone loss after the first year) are within the accepted standards success criteria for implants.²³

Regarding the implant failures, the majority occurred in the first 6 months of function, following the pattern for Branemark system implants,²⁴ with no significant differences

in the location of the failures (maxilla or mandible). The variables associated with the outcome of implant failure in the regression analysis were “type of implant” and “type of rehabilitation”. The results recorded for the type of implant variable, revealed a strong protective effect for the MkIII and Nobelspeedy implants when compared with the MkII implant. This protective effect observed in this study is maybe related to a more primary anchorage capacity of these implants compared to the MkII implant, with increased advantages of its use for rehabilitating areas with less dense bone.²⁵⁻²⁷ Regarding the variable type of rehabilitation, the partial rehabilitations were identified as a strong risk factor for implant failure when compared with single teeth and complete edentulous rehabilitations. This result follows a similar pattern reported before, with single teeth implant supported rehabilitations performing better in the long-term follow-up when compared to partial implant supported rehabilitations.²⁸ Empirically, this result can maybe be explained by the biomechanical effect: adjacent teeth can have a protective effect on a single teeth implant, fact that does not occur in partial rehabilitations. The fact that no difference was found for the complete edentulous rehabilitations can maybe be explained by the load distribution (load distributed for all the implants reducing the load on posterior implants) while in partial rehabilitations the effect does not occur with such efficacy (only 2 implants in the posterior region supporting the load); adding to the known increase of stress and strain magnitudes around supporting implants when using narrow diameter implants.¹³ This study did not answer these questions and so they remain open to future research. The limitations of this study are the retrospective design of the study, and only one clinic involved. Clinical trials with long-term follow-up should be performed to investigate the long-

term outcome of using narrow diameter implants when compared to regular platform implants in fixed prosthetic rehabilitations.

CONCLUSION

Within the limitations of this study, the use of narrow diameter implants for the prosthetic rehabilitation of posterior regions of the jaws seems viable, with good outcomes in the long-term follow-up, irrespective of the surgical technique implemented (2-stage, 1-stage or immediate function). When rehabilitating the posterior regions of the jaws with narrow diameter implants, the use of more recent implants seemed to favour a protective effect against implant loss, whereas the type of rehabilitation to be performed, namely partial rehabilitations, yielded a risk factor for implant failure in this study, when compared with the single tooth and complete edentulous rehabilitations.

REFERENCES

1. Albrektsson T, Brånemark PI, Hansson HA, Lindström J. Osseointegrated titanium implants. Requirements for ensuring a long-lasting, direct bone-to-implant anchorage in man. *Acta Orthop Scand*. 1981;52(2):155-70.
2. Adell R, Lekholm U, Rockler B, Brånemark PI. A 15-year study of osseointegrated implants in the treatment of the edentulous jaw. *Int J Oral Surg*. 1981 Dec;10(6):387-416.
3. Brånemark PI, Adell R, Albrektsson T, Lekholm U, Lundkvist S, Rockler B. Osseointegrated titanium fixtures in the treatment of edentulousness. *Biomaterials*. 1983 Jan;4(1):25-8.
4. Brånemark PI. Osseointegration and its experimental background. *J Prosthet Dent*. 1983 Sep;50(3):399-410.
5. Parel SM, Branemark PI, Jansson T. Osseointegration in maxillofacial prosthetics. Part I: Intraoral applications. *J Prosthet Dent*. 1986 Apr;55(4):490-4.
6. Degidi M, Piattelli A, Carinci F. Clinical Outcome of Narrow Diameter Implants: A Retrospective Study of 510 Implants. *J Periodontol* 2008;79:49-54.
7. Comfort MB, Chu FC, Chai J, Wat PY, Chow TW. A 5-year prospective study on small diameter screwshaped oral implants. *J Oral Rehabil* 2005;32:341-345.
8. Zinsli B, Sägesser T, Mericske E, Mericske-Stern R. Clinical evaluation of small-diameter ITI implants: a prospective study. *Int J Oral Maxillofac Implants*. 2004 Jan-Feb;19(1):92-9.
9. Hallman M. A prospective study of treatment of severely resorbed maxillae with narrow nonsubmerged implants: results after 1 year of loading. *Int J Oral Maxillofac Implants*. 2001 Sep-Oct;16(5):731-6.

10. Winkler S, Morris HF, Ochi S. Implant survival to 36 months as related to length and diameter. *Ann Periodontol*. 2000 Dec;5(1):22-31.
11. Allum SR, Tomlinson RA, Joshi R. The impact of loads on standard diameter, small diameter and mini implants: a comparative laboratory study. *Clin Oral Implants Res*. 2008 Jun;19(6):553-9.
12. Akça K, Cehreli MC, Iplikçioğlu H. Evaluation of the mechanical characteristics of the implant-abutment complex of a reduced-diameter morse-taper implant. A nonlinear finite element stress analysis. *Clin Oral Implants Res*. 2003 Aug;14(4):444-54.
13. Cehreli MC, Akça K. Narrow-diameter implants as terminal support for occlusal three-unit FPDs: a biomechanical analysis. *Int J Periodontics Restorative Dent*. 2004 Dec;24(6):513-9.
14. Malo P, Rangert B, Nobre M. All-on-4 immediate-function concept with Branemark System implants for completely edentulous maxillae: a 1-year retrospective clinical study. *Clin Implant Dent Relat Res* 2005;7(Suppl1):S88-94.
15. Malo P, De Araújo Nobre M, Rangert B. Short implants placed one-stage in Maxillae and Mandibles: A retrospective clinical study with 1 to 9 years of follow-up. *Clin Implant Dent Relat Res* 2007;9(1):15-21.
16. Davarpanah M, Martinez H, Tecucianu JF, Celletti R, Lazzara R. Small-diameter implants: Indications and contraindications. *J Esthet Dent* 2000;12:186-194.

17. Vigolo P, Givani A, Majzoub Z, Cordioli G. Clinical evaluation of small-diameter implants in single-tooth and multiple-implant restorations: A 7-year retrospective study. *Int J Oral Maxillofac Implants* 2004;19:703-709.
18. Addel R, Lekholm U, Rockler B, Branemark PI. A 15-year study of osseointegrated implants in the treatment of the edentulous jaw. *Int J Oral Surg* 1981; 10:387-416.
19. Degidi M, Piattelli A, Iezzi G, Carinci F. Wide-diameter implants: analysis of clinical outcome of 304 fixtures. *J Periodontol.* 2007 Jan;78(1):52-8.
20. Polizzi G, Rangert B, Lekholm U, Gualini F, Lindström H. Brånemark System Wide Platform implants for single molar replacement: clinical evaluation of prospective and retrospective materials. *Clin Implant Dent Relat Res.* 2000;2(2):61-9.
21. Misch CE, Wang HL. Immediate occlusal loading for fixed prostheses in implant dentistry. *Dent Today.* 2003 Aug;22(8):50-6.
22. Misch CE, Degidi M. Five-year prospective study of immediate/early loading of fixed prostheses in completely edentulous jaws with a bone quality-based implant system. *Clin Implant Dent Relat Res.* 2003;5(1):17-28.
23. Albrektsson T, Isidor F. Consensus report of session IV. In: Lang NP, Karrington T, eds. *Proceedings of the First European Workshop on Periodontology.* London: Quintessence, 1994:365–369.
24. Esposito M, Hirsch JM, Lekholm U, Thomsen P. Failure patterns of four osseointegrated oral implant systems. *J Materials Science Materials in Medicine* 1997; Suppl 8: S843-S847.

25. Maló P, Nobre Mde A, Petersson U, Wigren S. A pilot study of complete edentulous rehabilitation with immediate function using a new implant design: case series. Clin Implant Dent Relat Res. 2006;8(4):223-32.
26. Watzak G, Zechner W, Busenlechner D, Arnhart C, Gruber R, Watzek G. Radiological and clinical follow-up of machined- and anodized-surface implants after mean functional loading for 33 months. Clin Oral Implants Res. 2006 Dec;17(6):651-7.
27. Malo P, De Araújo Nobre M, Rangert B. Implants placed in immediate function in periodontally compromised sites: A five-year retrospective and 1-year prospective study. J Prosthet Dent 2007; 97:S86-S95.
28. Pjetursson BE, Brägger U, Lang NP, Zwahlen M. Comparison of survival and complication rates of tooth-supported fixed dental prostheses (FDPs) and implant-supported FDPs and single crowns (SCs). Clin Oral Implants Res. 2007 Jun;18 Suppl 3:S97-S113.

FIGURES

Figure 1: Pre-operative orthopantomography showing absence of teeth #25.



Uncorrected version

Figure 2: Pre-operative intra-oral photography.



Uncorrected version

Figure 3: Intra-oral photography with definitive rehabilitation completed.



Uncorrected version

Figure 4: Intra-oral photography showing the occlusal view of the definitive prosthetic rehabilitation in position #25.



Uncorrected version

Figure 5: Patient smiling with definitive rehabilitation.



Uncorrected version

Figure 6: Orthopantomography with definitive rehabilitation with 1-year of follow-up.



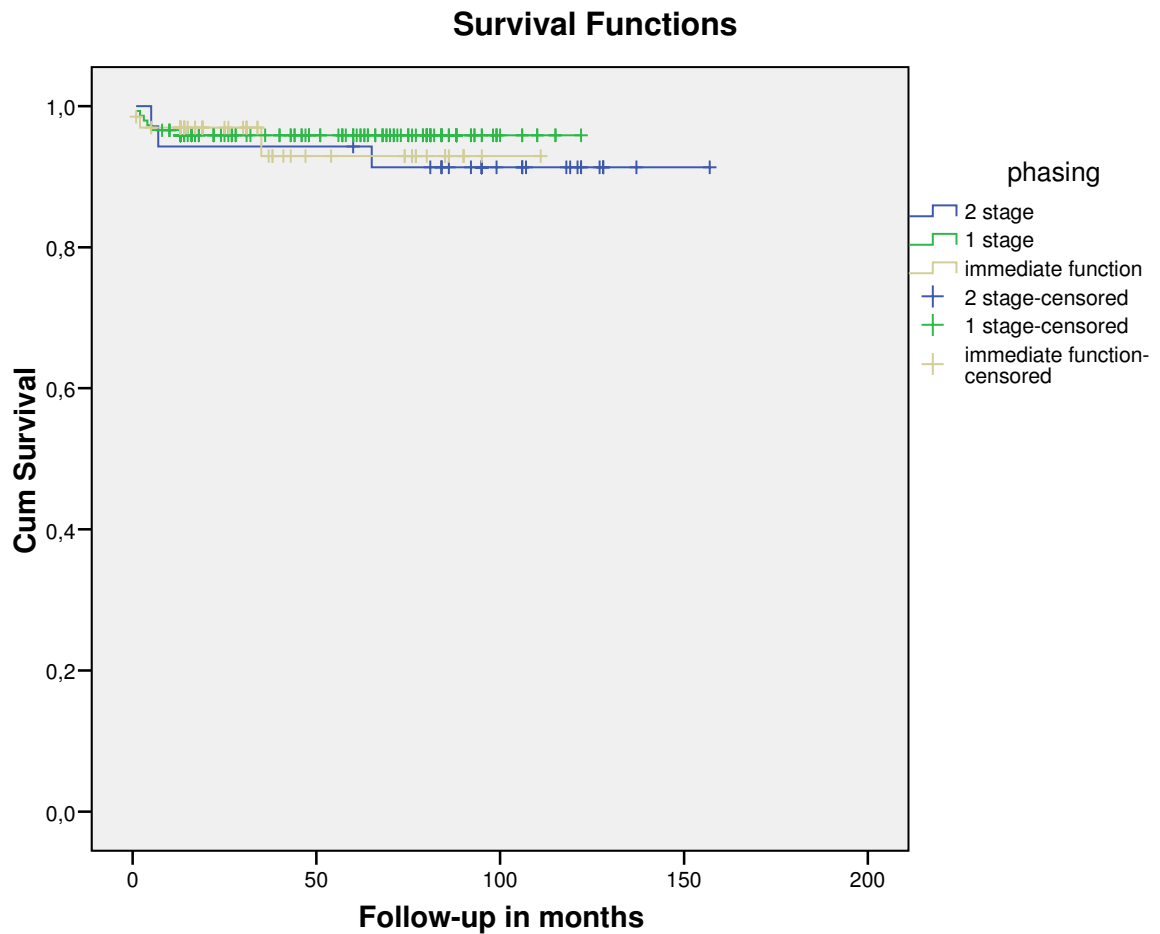
Uncorrected version

Figure 7: Periapical radiograph showing 3 years of follow-up for implant #25.



Uncorrected version

Figure 8: Kaplan-Meyer product limit estimation for the survival of narrow diameter implants according to the surgical technique.



Uncoi

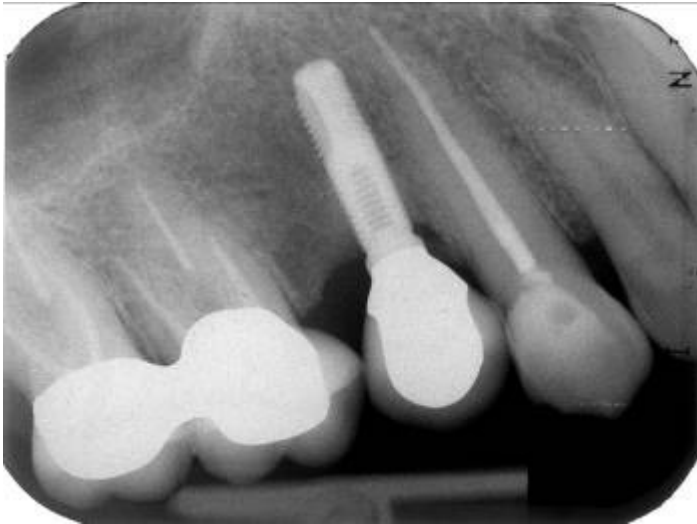
Figure 9: Representative radiograph of a narrow diameter implant with 1 year of follow-up.



Figure 10: Representative radiograph of a narrow diameter implant with 5 years of follow-up.



Figure 11: Representative radiograph of a narrow diameter implant with 10 years of follow-up.



Uncorrected version

TABLES

Table Ia- Narrow diameter implant distribution by the different locations in the posterior maxilla and type of surgical approach

Implant position and type of surgical technique	17			16			15			14			24			25			26			27			
	2-s	1-s	I-f	2-s	1-s	I-f	2-s	1-s	I-f	2-s	1-s	I-f	2-s	1-s	I-f	2-s	1-s	I-f	2-s	1-s	I-f	2-s	1-s	I-f	
MkII/10mm/machined							1					1													
MkII/11.5mm/machined																								1	
MkII/13mm/machined							1			3	4	1		2											1
MkII/15mm/machined	1						1			2(1)	1		1(1)												
MkIII/10mm/machined														1			2			1					
MkIII/11.5mm/machined							1(1)								1										
MkIII/13mm/machined							1			4	1		1	1		1	1	2					1		
MkIII/15mm/machined				1	2		1	5	1	3	10	2	2	3	3	3	2								
MkIII/10mm/oxidized													1												
MkIII/11.5mm/oxidized							1			1															
MkIII/13mm/oxidized								2	1					1	1	1	1								
MkIII/15mm/oxidied							1		2		1(1)	5		6(1)	3										
Speedy/10mm/oxidized													1(1)							1					
Speedy/13mm/oxidized											1	3(1)			2										
Speedy/15mm/oxidized											3	4		1	4					2			1		

2-s – 2-stage surgical technique
 1-s – 1 stage surgical technique
 I-f – Immediate function technique

Table Ib- Narrow diameter implant distribution by the different locations in the posterior mandible and type of surgical approach

Implant position and type of surgical technique	47			46			45			44			34			35			36			37			
Type of 3.3mm impl/length/surface (lost)	2-s	1-s	I-f	2-s	1-s	I-f	2-s	1-s	I-f	2-s	1-s	I-f	2-s	1-s	I-f	2-s	1-s	I-f	2-s	1-s	I-f	2-s	1-s	I-f	
MkII/10mm/machined				1				1(1)			2(1)			2(1)			2								
MkII/13mm/machined					1																				
MkII/15mm/machined								2(1)																	
MkIII/10mm/machined		1			5		1	3			3						1					2			
MkIII/11.5mm/machined		1(1)						1			2			4	1		2					2			
MkIII/13mm/machined					1		1	1						1											
MkIII/15mm/machined									1								1					2			1
MkIII/10mm/oxidized					1					1					2						1				1
MkIII/11.5mm/oxidized		2			1																1				
MkIII/13mm/oxidized					1			1			1										1				
MkIII/15mm/oxidied										1	1			2											
Speedy/10mm/oxidized					6			3	2		1			3			2					4		1	
Speedy/11.5mm/oxidized					1																	1			
Speedy/13mm/oxidized											1														
Speedy/15mm/oxidized								1			1														

2-s – 2-stage surgical technique
 1-s – 1 stage surgical technique
 I-f – Immediate function technique

Table II: Information on the implant loss

Patient	Gender	Age	Type of implant	Implant position	Surgery staging	Time of loss in months	Observations
1	F	47	MkIII 3.3x11.5 Machined	25	2-stage	65	
2	F	32	MkII 3.3x15 machined	14	2-stage	5	
3	F	27	MkII 3.3X10 machined	44	1-stage	2	
4	M	56	MkII 3.3X10 machined	45	1-stage	13	
5	F	45	MkII 3.3X10 machined	34	1-stage	4	Smoker, Hepatitis B
6	M	62	MkII 3.3X15 machined	45	1-stage	1	Smoker
7	F	56	MkII 3.3x15 machined	24	2-stage	7	
8	F	44	Nobelspeedy groovy 3.3x13 oxidized	14	Immed. Function	2	
9	F	51	MkIII 3.3X11.5 machined	47	1-stage	3	Smoker
10	F	64	MkIII 3.3x15 oxidized	24	1-stage	5	
11	F	29	MkIII 3.3x15 machined	14	Immed. Function	35	Smoker
12	F	39	Nobelspeedy groovy 3.3x10 oxidized	14	Immed. Function	1	Hypertiroidism

Table III- Odds Ratio (OR) with 95% Confidence Intervals (CI) for patient age, patient gender, smoking status, type of rehabilitation, surgery staging, type of implant, implant surface, implant length and surgeon experience.

Factor	OR	95% CI	OR [¥]	95% CI
Type of rehabilitation				
Single teeth	1.0			
Partial bridge	4.56	1.32-15.78	4.75	1.29-17.53
Total bridge				
Surgeon experience				
Limited experienced	1.0			
Experienced	1.55	0.18-13.49		
Very experienced	0.25	0.02-2.59		
Type of implant				
MkII	1.0			
MkIII	0.15	0.04-0.55	0.14	0.03-0.54
Nobelspeedy	0.13	0.03-0.69	0.14	0.03-0.75

[¥] OR from backward conditional logistic regression analysis with patient age, patient gender, smoking status, type of rehabilitation, surgery staging, type of implant, implant surface, implant length and surgeon experience as explanatory variables. The univariate and analysis disclosed significant differences for type of rehabilitation, surgeon experience and type of implant. Type of rehabilitation and type of implant remained significant after adjusting for the other variables of interest.